



Online Board Self Assessment Survey

<i>School District and Survey Year</i>	
<i>District</i>	<i>2016</i>
<i>District</i>	<i>2015</i>
<i>District</i>	<i>2014</i>

Since 2011, school boards across our state have participated in the WSSDA Board Self-Assessment, which is based on the five Washington School Board Standards. The report generated by the survey questions is thorough and thought-provoking. Participating boards report that analyzing this data as a team leads to rich and productive discussions.

The data on the following page is organized in a color-coded, horizontal-stacked bar chart that shows your results at the level of the five standards. The explanation for the color code is just above the data chart. Subsequent pages show the data from each question, with the page header showing the standard and benchmark the question relates to.

Analyzing your Results: Looking at Data

Start with the following page, which shows your district's aggregated data for each of the five standards. Identify standards that capture strengths, growth areas and or divergent perspectives, then work through the benchmarks and indicators for those standards.

Here is a simple protocol for your use.

Step 1: What do you see?

Describe what you see in the data, identify where it is located to the group. This is not about interpretation at this stage, only what you see.

List the descriptions on chart paper.

Step 2: What does the data suggest?

Discuss what the data suggests and try to generate different interpretations. Ask clarifying questions of one another to increase clarity and understanding of one another's perspectives.

List responses on the chart paper.

Step 3: Identify goal areas from the lists generated.

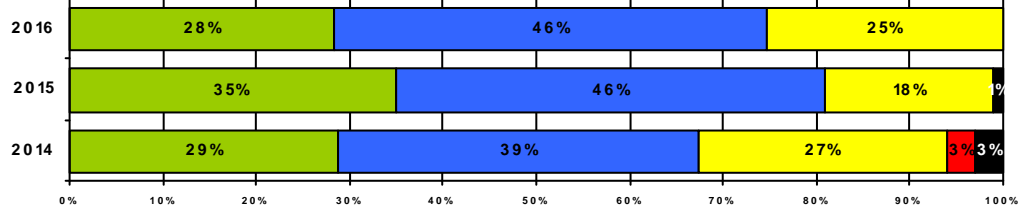
Step 4: Build two to three goals using the SMART goal framework.

Specific, Measurable, Achievable, Relevant and Time bound

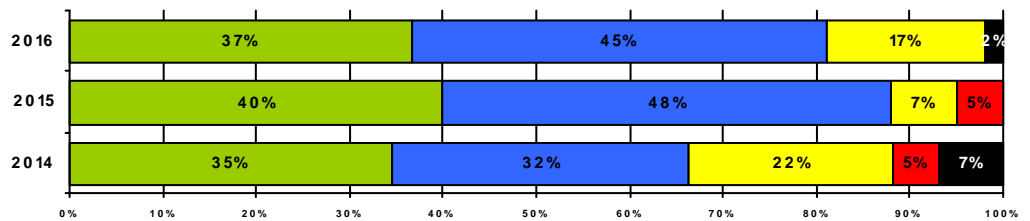
Framework for Governance: Aggregate Data

■ Always
 ■ Most of the time
 ■ Some of the time
 ■ Never
 ■ Don't know

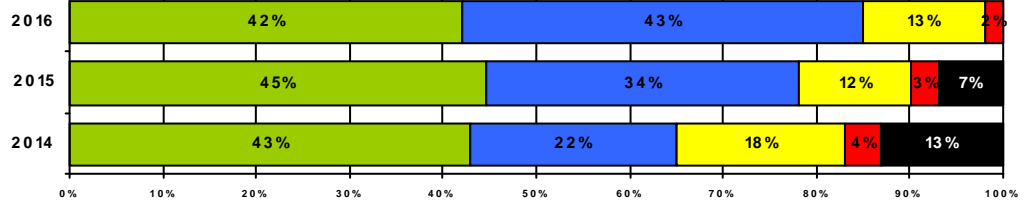
Standard 1:
Provide responsible school district governance



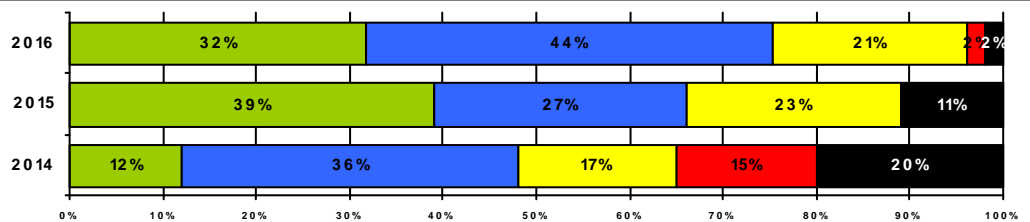
Standard 2:
Set and communicate high expectations for student learning with clear goals and plans for meeting those expectations



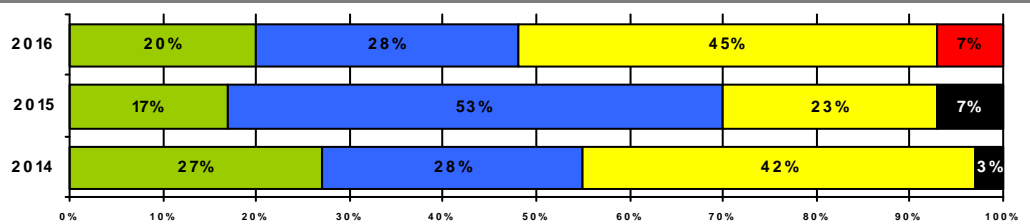
Standard 3:
Create conditions district-wide for student and staff success



Standard 4:
Hold school district accountable for meeting student learning expectations



Standard 5:
Engage local community and represent the values and expectations they hold for their schools

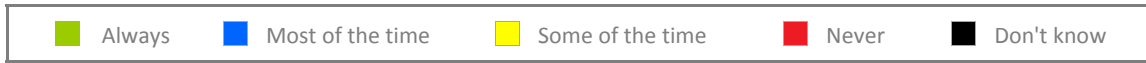


Standard 1

Provide responsible school district governance by:

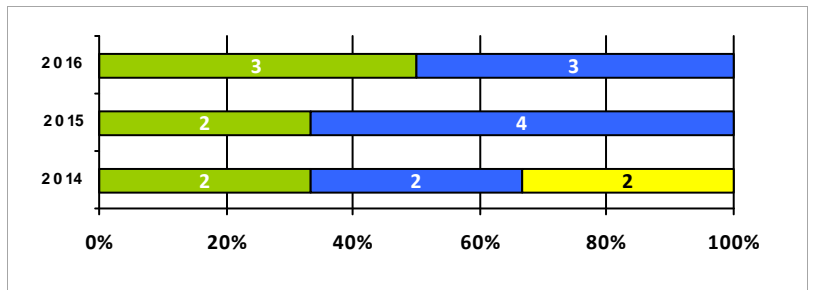
Benchmark of Success A

Conducting board and district business in a fair, respectful and responsible manner.

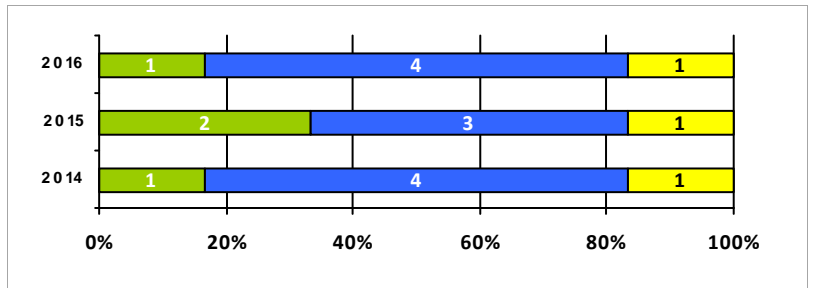


To what extent does our board:

Q 4 Base its decisions on what is best for students' success?



Q 5 Commit to a clear and shared purpose?



Notes: